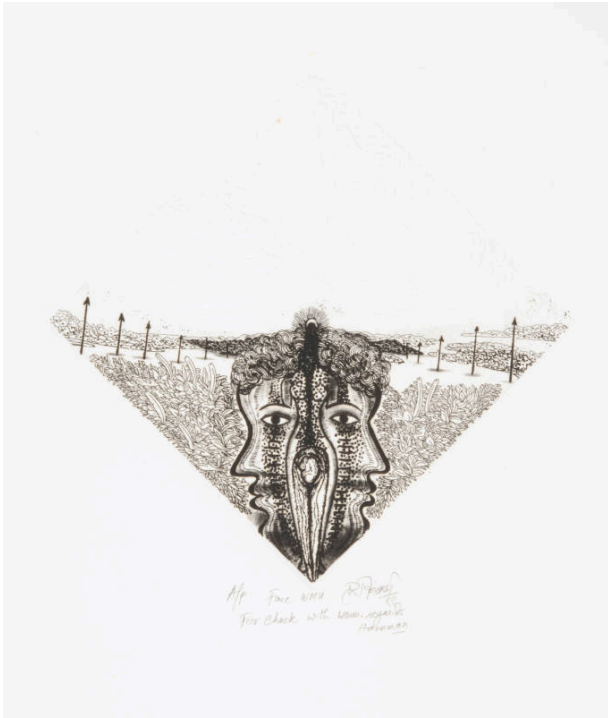


# Basic Detail Report

---



## Face

### Date

1999

### Primary Maker

Hanuman Kambli

### Edition

artists proof

### Medium

Etching on paper

### Dimensions

IMAGE: 8 1/8 x 8 1/8 in. (206.4 x 206.4 mm) SHEET: 19 1/4 x 15 1/8 in. (489 x 384.2 mm)

### Credit Line

KSU, Marianna Kistler Beach Museum of Art, gift of the Jonathon Stroh family on behalf of Charles Stroh

### Object number

2023.53