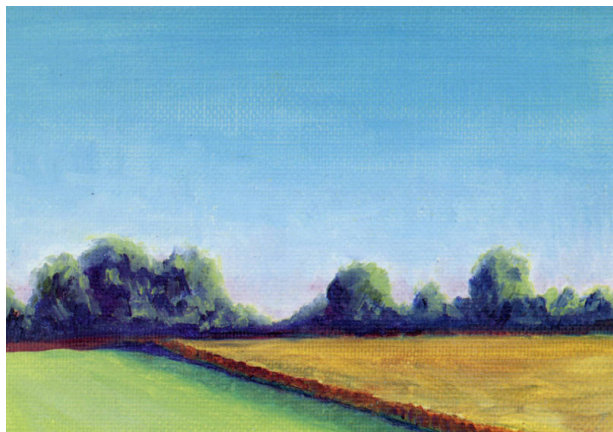


# Basic Detail Report

---



## Dusk by the Ninnescah

### Portfolio

Kansas Artists' Postcard Series XVIII

### Date

1995

### Primary Maker

Kristi Flowerday

### Medium

Photomechanical reproduction on paper

### Dimensions

IMAGE/SHEET: 4 x 5 13/16 in. (101.6 x 147.6 mm)

### Credit Line

KSU, Marianna Kistler Beach Museum of Art

### Object number

CM16g.2023