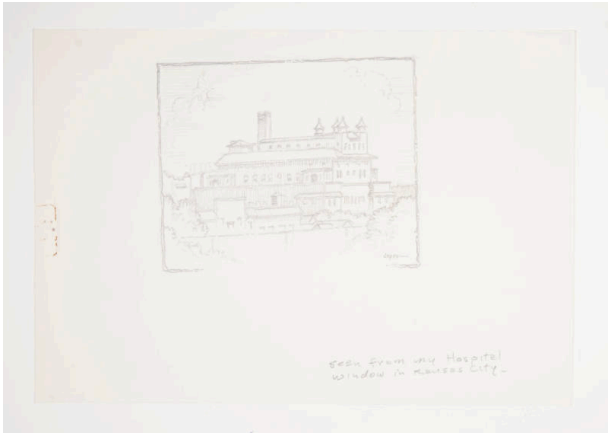


Basic Detail Report



Title unknown (hospital view)

Date

1966

Primary Maker

Herschel C. Logan

Medium

Graphite on paper

Dimensions

IMAGE: 4 1/8 x 5 1/8 in. (10.5 x 13 cm) SHEET: 7 1/4 x 10 1/2 in. (18.4 x 26.7 cm)

Credit Line

KSU, Marianna Kistler Beach Museum of Art, gift of Peggy L. Sondergard & Samuel H. Logan

Object number

2019.128